

47th annual

FREE DIRECTORY

# FALL JEFFERSON SEPTEMBER 27-28, 2024

AUTO SWAP MEET

CAR SHOW / CARS FOR SALE CORRAL



## TWO DAY CAR SHOW

Sept 27 8am-4pm- Sept 28 6am-4pm

**FEATURING:** *Traditional  
Hot Rods & Customs*

All makes models welcome!

**SHOW GROUNDS:** page 18-20

**CAR CORRAL:** page 18

**ADVERTISERS INDEX:** page 3

**FEATURE CARS:** page 6-7

**FEATURE VENDORS:** page 5

**VENDOR LIST:** page 12-15

**CHECK OUT ONLINE CAR CORRAL  
@ MADISONCLASSICS.COM**

**2025 Madison Classics Show Dates:**

Spring Jefferson April 25-26 / Garys Hot Rod Reunion June 21

Fall Jefferson Sept 26-27

# Culver's®



come in on  
**September 27-28**  
 with wristband  
 from car show &  
 get  
**2 for \$8**  
**Double Deluxe!**



Culver's of Johnson Creek  
 525 Village Walk Ln  
 Johnson Creek, WI 53038  
 920-699-8420



Represent your Business in our next Jefferson Swap Meet & Car Show Directory Reaching Potential Customers for you!

Contact: Madison Classics  
 PO Box 7414  
 Madison, WI 53707  
 info@madisonclassics.com

[www.madisonclassics.com](http://www.madisonclassics.com)

- Directory of Advertisers
- 48 Hour Film Project ..... 17
- Auto City Classic ..... 4
- Culver's ..... 2
- Chocolate Shop Ice Cream ..... 16
- Freeman's Super Sunday Swap Meet ..... 21
- Greenfield Gallery Collectables & Titles ..... 11
- Jensen Camaro ..... 20
- Krueger Classics ..... 11
- Merv's Classic Chevy Parts ..... 16
- Midwest Equipment ..... 22
- Midwest Fabrication ..... 7
- O'Reilly Auto Parts ..... 23
- Reliable Plating Works ..... 16
- Rocker King ..... 16
- Spangler's Campground ..... 6
- TLC Restorations ..... 24
- Vinnie's Rock Bottom Express Bar & Grill ..... 22
- Wedl's Hamburger Stand & Ice Cream Parlour ..... 21
- Woody's Auto Literature & More ..... 11

<b>WISCONSIN'S PREMIER SHOW!</b>		
<b>SPRING</b> 48 Annual <b>Jefferson</b> April 25-26, 2025 <p><b>2 Day Swap Meet &amp; Cars For Sale Corral</b>          3,100 Swap Spaces  <i>Car Corral NOW ONLINE!</i>  <b>2 Day Car Show (Fri &amp; Sat)</b>  <i>All Makes Models Welcome</i>          Featuring: Pontiacs</p>	2nd Annual <b>Gary's Hot Rod Reunion</b> June 21, 2025 <p><b>Swap Meet &amp; Cars For Sale Corral</b>          600 Swap Spaces  <i>Car Corral NOW ONLINE!</i>  <b>Car Show</b>  <i>All Makes Models Welcome</i>          Featuring: Convertibles</p>	<b>Fall</b> 48 Annual <b>Jefferson</b> Sept 26-27, 2025 <p><b>2 Day Swap Meet &amp; Cars For Sale Corral</b>          3100 Swap Spaces  <i>Car Corral NOW ONLINE!</i>  <b>2 Day Car Show (Fri &amp; Sat)</b>  <i>All Makes Models Welcome</i>          Featuring: Fords</p>

For More Information call (608) 244-8416 or Visit [www.madisonclassics.com](http://www.madisonclassics.com)

# GLASS

**STREET RODS - CLASSICS - MUSCLE CARS**  
ALL MAKES 1930s - 1980s



SMOKED GRAY WINDSHIELDS  
AVAILABLE FOR MANY MODELS

**WINDSHIELDS \$119 & up**

**COMPLETE GLASS PACKAGES**



**VENTS - DRS - QTRS**



**Muscle Car Side Glass Back Glasses**

**FLAT GLASS PKG**  
Windshield (1 or 2pc Flat)  
4pc Side Glass + Back Glass  
Your Patterns or Ours  
**\$299 & up**

6pc Assembled Side Sets  
1955-1964 Chev/Pont  
HT & CONV - IN STOCK



1955-57 Chev/Pont 2DR Sedan  
Assembled Side Sets \$399

**CUSTOM CUT GLASS**

Clear • Orig Tint • Custom Grey We have 1000s of orig. patterns or we can cut to your pattern

## GAS TANKS

**GM • FORD • CHRY**  
**STAINLESS STEEL**



Over 400 Models  
41-62 Cadillac • 32-54 Chev & up  
32-54 Ford & up • Full Size  
Pick Ups • Chevells • Camaro  
Mopar • Mustang • T-Birds  
Nova • Corvette • Skylark  
GTO • Cutlass

Sending Units  
& Straps Avail.

## GM TILT STEERING COLUMNS

**Chrome or Black \$199 & up**



Automatic & Floor Shift  
Kits Available - All Models

67-72 Chevy Pickup Direct Fit

**Examples:** 55-57 Chevy • Chevelle • GTO

**Steering Wheel Kits \$175**  
(parts also sold separately)

Styles: Banjo, Impala  
Wing, GT, 3-Spoke, Wood

## MANUAL & POWER BRAKES

All Parts Sold Separately

**GM • FORD • CHRY CARS & TRUCKS Front & Rear**

**\$349 & up**



5 or 6 Lug  
Pickup

Drilled & Slotted Rotors  
Drop Spindles Available

7" OR 9" Single or Dual Boosters  
Gold Anodized or "Chrome"

## BUMPERS

1959 - 1961  
Chevy

**UNDER BUMPER VALANCE PAN**

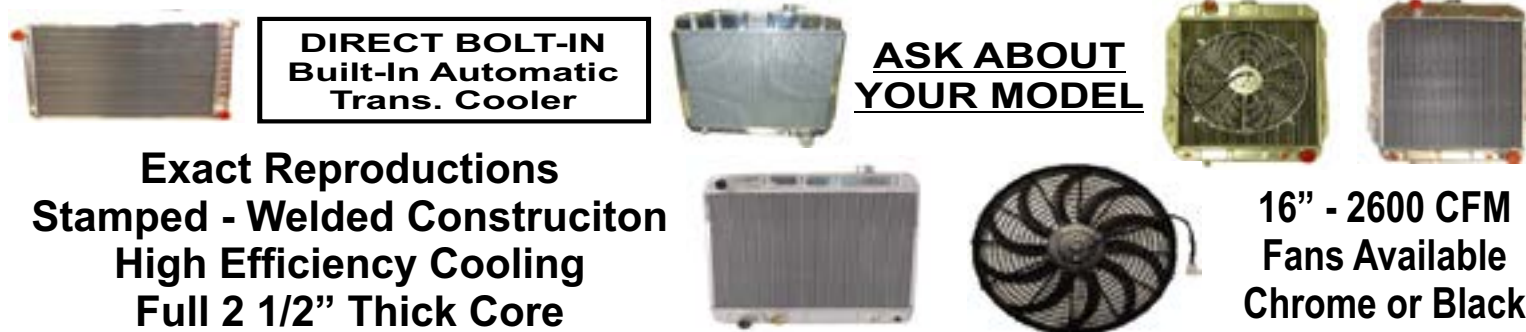


"Show Special"  
\$179 per pan

Direct Fit & Heavy Gauge  
Steel Like Original

## RADIATORS

**\$199 & up ALUMINUM LIGHTLY POLISHED**



**DIRECT BOLT-IN**  
Built-In Automatic  
Trans. Cooler

**ASK ABOUT  
YOUR MODEL**

Exact Reproductions  
Stamped - Welded Constructon  
High Efficiency Cooling  
Full 2 1/2" Thick Core

16" - 2600 CFM  
Fans Available  
Chrome or Black

Parts for Many Makes & Models: 55-57 Chevy • 58-64 Chevy • 64-72 Chevelle

**SEE US IN BUILDING "J" - Same Red Field Spaces With a Building Around Them  
To Save on Shipping Costs: Pick up your parts now or order for fall show**

autocityclassic.com

"Satisfaction Guaranteed"

Prices are subject to change

**800-828-2212 AUTO CITY CLASSIC 763-444-5880**

# The Auto Archaeologist

Hello fellow Fall Jefferson participants! Wow what a year this has been. My name is Ryan Brutt, I am the Automotive Archaeologist. I travel around mostly the Midwest, documenting vehicles (and other engine powered do-dads) that are sitting in neglected situations. Some call them barn finds, and it is true, I have found many of a car in a barn. But sometimes it is so much more!

I have been doing this more seriously for over a decade. My yearly calendar is focused on traveling usually in the fall, winter (if not below freezing) and early spring. Those are normally the best times to go car hunting. You can find stuff that is normally buried behind plant growth at those times of year. Or even just walking a junkyard. Have you tried walking a yard in the middle of summer lately? Usually, they are completely overgrown with vines and weeds.

Those adventures have allowed me the opportunity to check out a wide variety of locations across the United States. A great majority of them are right here in Wisconsin. My family has a place in Newville in one of the campgrounds, and it allows me the ability to use that as my base of operations when open, and expand my reach beyond what I normally can do. There are tons of nooks and crannies out there to check out.

Some of the crazier finds has been me finding an old oil drum for some factory that the owner had laid on the side, welded on some doors and was using it to store his 1965 Plymouth Satellite that he drove in high school! Another individual had taken an old church and turned it into storage for his car collection, mostly filled with GM muscle cars. Another guy had enough forethought that he laid all his Camaros and other Chevrolet Muscle Cars neatly in rows, on old barn tin to protect them from the elements. Very rarely do I find cars so meticulously cared for and planned long term storage.

There are other times though that I am invited to check out cool collections. Up in Coon Valley, Wisconsin is Mega Parts. A Mopar parts supplier, they have a crazy collection of amazingly rare cars just stashed all over the place! Hemi cars, Six Packs, Mr. Norm Demon! They have a bit of it all, and most have been sitting for the better part of a decade while they focus on the business.

Not far from there is Elmer's Auto Graveyard, a huge sprawling junkyard filled with a every sort of classic car you can imagine, from a 1969 Dodge Charger R/T, or a 1972 Heavy Chevy. The yard owners have turned the yard into a sort of art exhibit. Like what is done down in Old Car City in Georgia. A few times a year the owners give tours of the yard, showing the wide variety of incredible cars that are normally off limits to the public.

I try my best to document as much of this automotive niche as I can. I normally do not share names or locations of the vehicles I find, unless they give me permission like Mega Parts or Elmer's. I am just there to document the cool cars that are still stashed away out there for people to uncover. You never know what you are going to find, until you start looking. There is still tons of cool cars, trains, planes, and motorcycles to dig out of barns, fields, and junkyards. You just must start!

If you have, or know of anything cool sitting in your barn or field, drop me a line at any of the locations below and I will respond!

<https://www.facebook.com/TheAutoArchaeologist/>  
<https://www.instagram.com/TheAutoArchaeologist/>  
<http://www.youtube.com/AutoArchaeology>  
<https://twitter.com/AutoArchaeology>  
<https://www.tiktok.com/@theautoarchaeologist>  
<http://www.barnfinds.org>

TheAutoArchaeologist@Yahoo.com





## 1932 Ford Dearborn Roadster

**Owners:** Louie & Diane Loui  
**Hometown:** Madison, WI  
**Motor:** Chevrolet 350 Crate w/ performance upgrades  
**Driveline:** 350 Turbo transmission w/ 9 inch Ford rear-end  
**Suspension:** 4 bar front, triangulated 4 bar rear-end on coil-overs  
**Special Features:** windshield laid back, chopped top folds down into body  
**Interior:** Tea's leather seat, heat, air, power windows, doors, brakes & tilt  
**Paint:** Flat Black



## 1950 Chevrolet Fleetline

**Owner:** Scott Buckley  
**Hometown:** Sun Prairie WI  
**Model:** Fleetline  
**Motor:** 327 C.I.  
**Special Features:** Voodoo Larry kustom body n chassis mods. 1952 Mercury headlights, all body mouldings shaved, Frenched 1950 Ford tail lights, 1950 Pontiac shark fin trim, 1951 Mercury fender skirts, 1951 Cadillac sombrero hubcaps.  
**History:** Rotisserie restored to original by John Dott @ Nostalgia Autobody in late 80's.  
**Paint:** Black Pearl

**SPANGLER'S CAMPGROUNDS**  
**920-988-3256**

Camping during the Swap Meet is available just ONE BLOCK North of Fair Park

Camp Spangler

E-mail: [mspanglar@jefnet.com](mailto:mspanglar@jefnet.com)  
 Facebook: Camp Spangler  
 State licensed /open for both Spring & Fall shows!



## 1951 Chevrolet 2dr Sedan

**Owners:** Scott Loui  
**Hometown:** Madison, WI  
**Motor:** EFI 350 CI Chevrolet  
**Driveline:** 350 automatic  
**Special Features:** Chopped by Eldon Titus in 1958.  
 Features 1952 Packard trim, 1953 Chrysler tail lights, 1953 Cadillac sombrero hubcaps, 1955 Pontiac over rider bar on 1951 Pontiac bumpers.  
 Body is channeled 4" over a 1974 Monte Carlo chassis

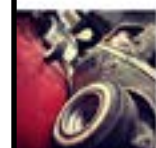
Delafield, WI

**Midwest FABRICATION**

Hot Rod and Custom Cars  
 414-455-6164



Located in front of Main Building A All Weekend



ACEHOLESINC.COM

**ACEHOLES**

NEW! & NEAT!  
 OUR NEW FRAME FEATURING THE 'BLEED SWEEP' GIVES YOUR HOT ROD A FANTASTIC STANCE! BARE FRAMES TO COMPLETE HOT RODS!

**SPECIAL ADJUSTABLE REAR PERCHES**

Call 262-968-3100 DELAFIELD WI.

# Gary's Hot Rod Reunion

*First event a bona fide success*

**STORY AND PHOTOS  
BY RON KOWALKE**

Those car enthusiasts who were feeling down from the demise of Madison Classics' Elkhorn (Wisconsin) event were able to fill that void with the debut of Gary's Hot Rod Reunion at the Racine County Fairgrounds in Union Grove, Wis. The former long-standing Elkhorn show, traditionally held in August, ended, according to a Madison Classics representative, due to "politics." The new Hot Rod Reunion, named for Madison Classics' head man, Gary Esse, debuted on June 15 to take advantage of cooler temperatures than what was the norm at the August Elkhorn event.

The Hot Rod Reunion, not unlike Elkhorn, acts as a bridge between Madison Classics' huge spring and fall shows held in Jefferson, Wis. The first event attracted a strong field of more than 500 show cars and trucks, according to Madison Classics. It also included a swap meet, car corral and a large display of vintage drag cars from the Brew City Gassers.

Keeping true to the hot rod theme of the event was Dave Hirtreiter, of Kenosha, Wis., who was showing his immaculate Victorian Plum Metallic ("a 1980 Cadillac color," according to Hirtreiter) 1930 Ford Model A five-window coupe. It's powered by a Ford 302-cid V-8 topped with three-deuce carburetion, and coupled to a four-speed manual transmission.



Mike and Karen Conner, of Franklin, Wis., own this 1975 Pontiac Grand Am Colonnade coupe with the full vinyl top treatment. The original Wisconsin car sports a 400-cid V-8 and automatic transmission, and has a long list of options including air conditioning, cruise control, tilt steering wheel and power windows.



Dave Hirtreiter, of Kenosha, Wis., built this 1930 Ford Model A five-window coupe hot rod. It's powered by a Ford 302-cid V-8 mated to a four-speed manual transmission. Hirtreiter (inset) holds a picture of the "basket case" Model A he purchased in 1982 for \$400 and transformed into the immaculate show piece he regularly drives today.



"I wanted to go ALL Ford," Hirtreiter emphasized as to his choice of powertrain. He added, "Nothing against Chevy," the go-to engine choice of hot rodders. "I bought the car in 1982 as a basket case. It was Swiss cheese 6 inches up from the bottom. It was a police officer's (car) in Tioga, New York, and I bought it for \$400."

Other than the Ford's redone interior, Hirtreiter said he performed the remainder of the Model A's restoration work himself over a period of years.

"The internet didn't exist back then, so I scoured a lot of swap meets to get the parts I needed," Hirtreiter stated, adding, "I built this car to drive and I drive it everywhere."

Displayed a few feet away from Hirtreiter's Ford, but miles apart from an eye-candy standpoint, was a 1968 Dodge D100 longbox pickup owned by Branden Newer of Franksville, Wis. The mostly original truck sported rattle-can paint touch-up, but remains remarkably rust-free considering its unknown amount of mileage and hard-working past life, according to Newer.

"It originally was a farm truck in Wyoming, and was driven to Alaska every year on a hunting trip," Newer explained. "I bought it three years ago from the second owner, who brought it to Wisconsin, and I've put about 1,500 miles on it."



This 1968 Dodge D100 longbox pickup is owned by Branden Newer of Franksville, Wis. It retains its original slant six-cylinder engine and three-on-the-tree manual transmission. Newer claims the Dodge's mileage is unknown, but it logged plenty as a Wyoming farm truck that annually hauled hunters round-trip to Alaska.



The swap meet contained lots of interesting items for sale, including salvageable parts from a demolished 1977 Pontiac Firebird Trans Am. Its "screaming chicken" graphic had the addition of a \$650 price tag.



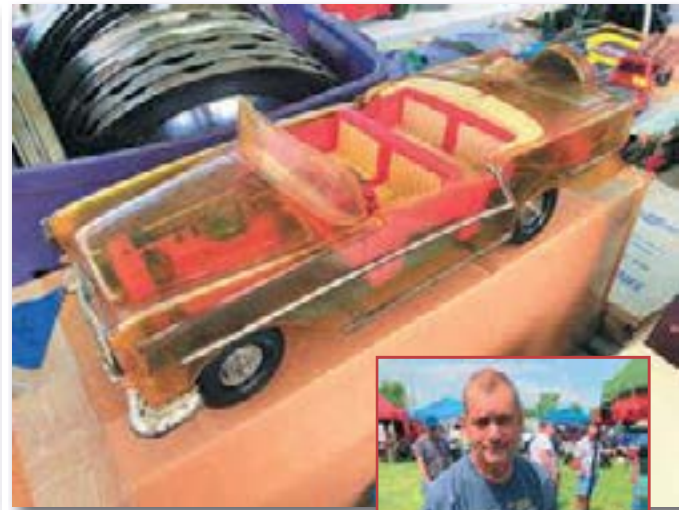


The car corral included this original 53,000-mile 1955 Ford Fairlane two-door Club Sedan. Under its hood is a 272-cid V-8 coupled to an automatic transmission. The windshield placard's listed asking price was \$8,500.

The Dodge houses a slant six-cylinder engine and three-on-the-tree manual transmission. Newer said he removed the two bed-side auxiliary fuel tanks and also replaced the engine's fuel pump and oil pan gasket, but otherwise it's all original. He added that the Dodge gets used regularly to haul garbage to his county's landfill.

"It's not fast, but it's really not fast when it's loaded down with garbage," Newer joked.

In the event's accompanying swap meet, an item offered for sale that elicited more questions than answers was a transparent plastic-bodied, large-scale model of a 1954 Oldsmobile Ninety-Eight Starfire convertible with continental kit manufactured by Ideal. Owned since 2014 when he said he inherited it from a friend, Werner Thiel, of Antioch, Ill., admitted he's done a lot of internet research on the



A tour of the swap meet turned up this Ideal-manufactured, transparent plastic-bodied scale model of a 1954 Oldsmobile Ninety-Eight Starfire convertible with continental kit. Offered for sale for \$225 by Werner Thiel of Antioch, Ill., he said his internet research to try and uncover the back story of the see-through Oldsmobile has been a bust.



Oldsmobile to try and uncover its back story, but has little to show for it. More important than getting his \$225 asking price for the see-through convertible, Thiel was hoping to garner more information about it from swap meet attendees stopping at his site.

Having a strong showing on its first attempt and getting the hoped-for pleasant June weather gives Madison Classics (www.madisonclassics.com) a solid foundation upon which to build future Gary's Hot Rod Reunion events into a summer staple between its spring and fall Jefferson shows. **OC**



Supporting the variety of vehicles on display was this 1934 Ford-bodied #A3 modified race car driven to many victories by Johnnie Reimer at Midwest short tracks in the 1960s and '70s. Powered by a Chevy 350-cid V-8, the modified was restored in 1981 and is currently owned by M.J. Both, of Racine, Wis.



This 1972 AMC Javelin AMX, 1 of 3,220 produced, underwent a 12-year rotisserie restoration and is owned by Joe Salzburg, of Richmond, Ill. When new, the AMX was green with a green interior, but is now finished in Wild Plum with ghosted gray accents. The 360-cid V-8-powered car was originally built in Wisconsin and sold by Topel AMC, a dealership in Kenosha.



**Woody's**  
AUTO LITERATURE  
*Self-Help*

Assembly Manuals  
Owner's Manuals  
Shop Manuals  
Sales Brochures  
Wiring Diagrams

3075 Millersburg Blvd, Faribault, MN 55021  
cell: 507-271-0993 email: woody@gofast.am  
Winter 2023 moving to 121 N Main St, Lonsdale, MN

We have a large selection of factory Repair/Service/Shop manuals, Owner's manuals, Assembly manuals, Sales brochures and wiring diagrams from 1900's to current!

**See us in spots WT 114-119**

Buy ★ Sell ★ Trade

**GAS PUMPS**

**Krueger Classics**  
Richard & Janet

P.O. Box 529  
Hazel Green, WI 53811  
(608) 854-2743

Come see us in Bld G, Featuring Restored Gas Pumps, Neon Signs, Metal Signs, Air Meters & Gas Station Memorabilia

## Vintage Titles Greenfield Gallery

Buying & Selling Automobile,

Truck, Motorcycle Titles

**Come & Say Hello**  
**We are Located In**  
**Main Building A**  
*(next to indoor feature cars)*

**Ph:262 363 5885**

E-mail: [ralph@greenfieldgallery.net](mailto:ralph@greenfieldgallery.net)



**2024 Fall JEFFERSON VENDOR LEGEND**  
This list of Pre-Registered Vendors as of Sept. 4, 2024

**LEGEND:**

- W\* = WHITE FIELD ROWS A,B,C, ECT...
- R\* = RED FIELD ROWS A,B,C, ECT...
- Y\* = YELLOW FIELD ROWS A,B,C, ECT...
- G\* = GREEN FIELD ROWS A,B,C, ECT...
- I\* = INDOOR FIELD ROWS A,B,C, ECT...
- BLDG #\* = BUILDING 1 OR 2

NAME	SPACES
3D SOUND COMPANY	RA 103-109
ABEL, JEFF	RS-RT 128-129
ACHILLI, TONY	YF-YG 170
ALLARD, MIKE	WH 092
ALLIANCE TRAILER SVC	RB-RC 103-104
ALLISON, MIKE	RD 110-111
ALLOY, FRANK	WZ 154
AMERICAN LEGION POST 209	YG 122-123
AMSOIL	RBA-RBB 137-141
ANDERSON, QUIN	IB 103-104
ANDERSON, ZACH	RU 118-119
ANTINUCCI, TERRY	YG 116
ARCHACKI, JOHN	YG 124-127
ARMBRUST, PETE	RP-RQ 119
ARTZ, CHRIS	WZ 114-116
AUERSWALD, CADEN	YH 132-137
AUGUSTIN, BETTY	RV 141-143
AUSTIN, TODD	RRL 111-112
AUTO CITY CLASSIC INC	IJ 101-106, RH 091-092, RI 092-093
AUTOMETER PRODUCTS	BLD #2 910
AYOTTE, THOMAS	WN 135-137
BADGER GLOVE & SAFETY	YK 146-149, YL 153-155
BALFE, BRUCE	WE 106
BALLARD, TODD	WA 176-177
BALZER, STEVE	RI 119-120
BANKS, RANDY	WI-WJ 99-100 WJ 98
BARBER, ELLEN	WT 145-146, WU 146
BARELS, DUSTY	YB-YC 159
BARNHART, JOHN	WL-WM 104-106
BARRIOS, FELIX	BLD #2 985-987
BATZKALL, MARK	WV 132-136
BEATTIE, EUGENE & LORI	YN 125
BECK, RICHARD	YI 160-162
BEHM, CAREY	YH 163-164
BELSCHNER, JOHN	YL 144, YM 144-145
BERENYI, TIM AND RICH	YN 113
BERGSTROM, TOM	WK 123-126
BERNAL, BERNIE	WK 129-132

BERNARD, CHARLES	YF-YG 128-129
BIHARY, JIM	WAA 156-160
BINKIEWICZ, BOB	WF-WG 157
BIRA, JIM	WH 098-100
BISHOP, DAN	YD-YE 123-126
BLANK, GREG	WAA 088-089
BLANK, MARK	RL 153-154
BLUE COLLAR	BLD #1 847-850 851-854 896-899 RH 114-115 RJJ 138
BLUE STAR PERFORMANCE	WE 135-138
BLUMER, KEVIN	WU 116-117
BOARDMAN, MARK	RK 143-146
BOB HOLTZ SALES	WL-WM 120-121
BOBS CLASSICS	WR 105-113
BOBST, JEFFERY	WE 145-146
BOGDANSKI, STAN	YD 158-160, YE 158-159
BOHART, FRED	RN 108
BOHLMAN, TOM	WU 120-122
BOLDT, LARRY	RD 103-109
BOLLIG, JASON	WB 106-110
BORCHARDT, STEPHEN	WC 142-146
BOUSHON, FRED	WJ 138-140
BOWDEN, STEVE	WF 137-139, WG137
BOWTIE TRUCK STOP	WA 107-113
BRAATZ, RICHARD	YI 141-143
BRAD PENN & PENN GRADE 1	WAA 100-102
BRANSON, KEN	RF-RG 089-091
BRAUTIGAM, MARK	YL-YM 156-159
BRENEMAN, BRYAN	RL 144-146
BRERETON, MICHAEL	RL 157-161
BRINK, ROB	YL 167-170
BROCKMAN, KEITH	BLD #1 814-815, WAB 109
BROOKS, MARK	RB-RC 83-84
BROWN, FLOYD	WAA 118
BROWNS OF TWO RIVERS INC	IB 132-133
BRUTT, RYAN	BLD#2 911-912, RH 122
BUDYSZ, MICHAEL	WI 122-126
BURDEN, JOHN	WV 113, WW 110-113
BURDICK, KURT	WD 089-094
BURKE, BERNARD	WE 139-140
BURMEISTER, KEITH	YJ-YK 128-130
BUSSEY, GARY	BLD#2 906-908
BUTLER CLASSICS	YA 122-126
BUYATT, KEVIN	WF 089-093
CABLE, KURT	WA 130-132
CALIFORNIA CUSTOMS	WY 110-111
CAMBLING, NEIL	YD 146-148
CAMPBELL, GORDON	WA 220-224
CAMPBELL, JAMES	YL 106-110
CAPTAIN, STEVE	RJJ 131-134
CARBO-LANTERN	IB 109-110
CAREY, BOB	BLD #2 909
CARRAO, RICH	WF 134-136
CARSTENSEN, ERIC	WA 185-187
CHAMBERLAIN, JIM	RQ 108-109
CHATFIELD, TERRY	RS 097-099, RN 99-100
CHECK, DYLAN	WE 141-142
CHEROKEE TIEDOWN	WAA 138-141
CHOJNACKI, TOM	WL-WM 143-147
CICERO, MIKE	WAB 105-107

CLASSIC AUTOMOTIVE LTD	WE 134
CLASSIC CHROME CO INC	WB 141-144
CLASSICS PLUS LTD	BLD #2 982-984
COAN, GARY	WL 151-157
COCOMA, CHUCK	RA 097-102
COCOMA, GEORGE	RD-RE 113-114
COFFEY, STEVE	WH 156-157, WI 157
COLLIER, TOM	YH 161-162
CONELY, CHARLES	WN-WO 144
CONNERS, SANFORD	WK 119
CONRAD, DONALD	YM 113-114
COOK, ALAN	YF-YG 141-143
COPUS, WILLIAM	WN-WO 131-133
CORDELL, MIKE	YM 116-119
CORELL, BLAINE	WD 119-126
COSTANTE, CHRIS	RS 106-108
CRASH ENTERPRISES	RJ 104-111
CUNDARI, DOMINIC	YH-YI 113-116
CUSHMAN, DAN	YN 148-150
CUSTOM PLATING SPECIALISTS	RD 086-091
CUSTOM RV SERVICES	RRN 106-107
CZECHOLINSKI, PAUL	YL-YM 101-103
D&D ENTERPRISE	IG 727-729
D&R CHROME	YJ 127, YK 122-127
DACQUISTO, SAM	WN 127-128, WO 127-130
DAFFINSON, KEVIN	WF 124-126
DAHL, DAVID	RE 84-87
DAILY, MATT	RE 88-90
DALSKY/BRANDON PETERSON, ROBERT	RD-RE 073-079
DALTON, FRED	WG 138-142
DALTON, RUSSELL	YH 118-120, YI 117-121, YH 117
DAMROW, LEE AND CHERYL	WG 134-136
DANNER, ERMA	RD-RE 125-126
DARASKEVICH, ED	WB 137-140, WC 137-141
DASSOW, DAVE	RH 088-090, RI 089-091
DAVIDS4SPEEDS LLC	WT 120-122
DAVIS, JOHN	WA 174-175
DAY, RICK	RG 113-117
DEGNER, DENNIS	WJ 117-119
DEGREEF, JON	RJ-RK 121
DENOVI, STEVE	RB-RC 109, RB 113-117, RC 113-116
DEREMER, CAL	YL 121-124
DEUSTER, TIM	WJ-WK 135-136
DEW PRODUCTS	WN-WO 104-109
DIESER, JOEL	WC 131
DILLON RADIATOR	RJ-RK 124-126
DOEHMANN, RUSSELL	WH 141-143
DOEPKE, STEVEN	YN 162
DOWNES, RON	WD 137-139
DRENSKI, ED	WQ 117-122
DRESCLER, MIKE	RRN 113-118
DRISSEL, KEVIN	WQ 133-134
DRIVELINE DESIGN	YM 163-164
DRYZCIMSKI, CHRISTOPHER	RN 129-134
DUBA, ED	WAA 115-117
DUKAS, GEORGE	RL 111-118
DUPUY, PAUL	RN 114-116, RR 100-101

DURANSO, JEFF	RC 069-075
DURST, ALLEN	WJ 131-132
DUTCHER, SCOTT	WI 104-105
DUTENHAFFER, BRYAN	RI 123-124
EAGLE BLASTING AND REPAIR	WA 133-138
EASTERSON, TODD	RR 102-105
EASTWOOD CO	BLD #2 974A-974E, 975, RP-RQ 120-121
ECKEL, JACOB	WA 188-189
ECKHOFF, KEN	WX 114, WY 105-109, 112-114
EISENBERG, GREG	WJ-WK 137, WK 138
ELERTSON, STEVE	RP-RQ 122-123
ELLIOTT, GARY	WL 140-142, WM 140-142
ELLIS, RICK	RO 117-119
ELM, MATT	WD 114-115
ENDRES, ALLEN	RI 069-072
ENRIGHT, MARK	WB 125-126
ERTEL, GENE	WA 178-181
ESCHBACH, GARY	YJ 131-133
EXCEL TOOL	RN 124-128
EXTREME ENTERPRISES	WD 96-98
FAHLGREN, MIKE	RRM 107
FAIRFIELD, IVAN	WD 109-111
FAIT, RICHARD	WY 132-139
FALMIER, DAVID	RD 123-124
FARINA, DINO	WP 133
FARINA, JOHN	WP 134
FAVOR, MARK	RL 152
FEDRAN, MIKE	RB 132-133
FELDNER CUSTOM EXHAUST	RV 139-140
FENSKE, MIKE	RU 124-127
FERGUSON, JASON	RW 120-122
FINISHING TOUCH	WAA 092, WE 089-093
FINK, DENNIS	YJ 138-140
FISCHER, JEFF	WU 127-128
FISCHER, TONY	RN 110
FLAIRTY, MIKE	YJ 115-116, YJ 117-120
FLENZ, DAN	RU 140-141
FLETCHER, TIM	WAA 124-128
FLITSCH, RICHARD	YK 101-102
FOG LIGHT CITY	BLD L 01-10, YKA 093
FOLEY, RICK	YH 138-143
FOLK, GREG	WA 228, WY 156
FOLMER, KURT	WB 132
FOLTZ, JIM	RE 118
FONDY PERF EXHAUST	BLD #2 932-935, RH 116-117
FORTIER, BRYAN	WL 127-136
FOX, JOE	WAA 120
FRASER, WILLIAM	WR 114-117
FRENCHVILLE TRAILER SALES, LLC	WT-WU 147-148
GALINSKY, BILL	RE 103-112
GARRETT, DONALD	YF-YG 133-134
GATEWOOD, JIM	WAB 103-104
GELTZ, WAYNE	YJ 144-145, YK 144-145
GERBER, DALE	RI 097-100
GERTZ, LES	WZ 155
GOEDKEN, KEVIN	YG 118-119
GOODEARLE, SHANE	RN 121

GOOSE LAKE AUTO PARTS	RQQ 108
GORSKI, MIKE	BLD #2 951-958, RP-RQ 104, RDA 130
GOTTSCALK, MARK	RS 136
GRAY, EARL	RS 117-119
GRAYDON, RON	RRL-RRM 129-130
GREEN, TODD	WAB 108
GREENER, BILL	RS 100
GRIESE, MARK	WAA 099
GRIMME, RICHARD	RK 069
GUENTHER, DON	RB 130-130A-130B
GUNDERSON, TIM	YN 116-117
GUTIERREZ, MICHAEL	WB 133 WC 132-133
HACK, NATHAN	WD 113, WE 112-113
HAGEMAN, LARRY	YK 113-120, YJ 113-114
HAGERTY INSURANCE	RB 131
HALL, THOMAS	RS 139-141
HALLFRISCH, DOUGLAS	WQ 135-139
HAMMERICH, DON	WH 151-155
HANSON, ANDREW	WQ 131-132
HARE, GREG	WX 142-143
HARRIS, VICTOR	WO 114-121
HARTIN, KEN	WC 089-092
HARTNEY, JOHN	WT-WU 123-124
HARTUNG, LANCE	RK 132-136
HAUGE, KEVIN	WG 124-126
HAVERLAND, BOB	WH 138-140
HEBEIN, MARK	BLD #2 916-920
HEIDENFELDER, TOM	IB 135-136
HELGESON, GREG	WF 121-123
HEMB, GORDY	RK 076
HEMING, DAVE	GF 103
HENDRICKS, SUZANNE / JOHN	RO 110
HENDRIX, MARK	WP 122-126
HENZIG, CHAD	YN 170-173
HERBST, MIKE	BLD #2 988-989
HERBST, PAT	RJ 112-115
HERWALD, MIKE	RP-RQ 127-129
HETZEL, KURT	BLD #2 966-969, RQQ 106-107
HIERL, MICHAEL	WT-WU 144, WU 145
HIETPAS, BRUCE	WL 107-112, WM 107-113
HILL, SCOTT	WD 118, WE 117-118
HINES, MATT	YL-YM 162
HOFFMAN, SCOTT	RRR 101
HOGSHOOTER, BOB	RL 155-156
HOHMAN, PAUL	WF 140-142
HOLLANDER, DAN	WY 115-117
HOLMES, JOHN	RW 134-135
HORNAK, ALEX	RS 132-134
HRONIK, RICK	WK 153
HRYNDEJ, MIKE	RC 118-120 RB 118-122
HUG, MICHAEL	WB 114-117, WC 114-118
HUNDER, GEORGE	YI 136
HUNKINS, TODD	YY 101-104
HYPERLITES CORP	WV 143-148, WW 144-148
IBARRA, DALE	YD 138-140
ILLICHMANN, KARL	YB-YC 172
INCREDIBLE CUSTOMS	BLD #2 993-994
JACKSON, JIM	WAA 111-114

JAEGER, DEAN	IB 149-150
JAGOW, NICK	WC 109-110
JANETSKI, PAUL	IG 736
JAYS BIG ROLLS	YD 144-145, YE 144-150
JENSON CAMARO	WA 193-212
JENNER, STEVE	YL-YM 134-135
JERNBERG, KEITH	YF-YG 168-169
JIMENEZ, EMILIANO	YB-YC 162
JOHNNYS OLD GARAGE	RN 109
JOHNSON, BRAD	RE 091
JOHNSON, BRUCE	YL 150
JOHNSON, DENNIS	WG 122-123
JOHNSON, RANDY	YH 125-127
JOHNSON, STEVE	YG 130-132
JUDGE, DAN	YH-YI 158-159
KALOUS, LARRY	WM 116
KAM TOOL & MOLD	WP-WQ 145-147
KANTARIK, JOE	WK 151-152
KEHL, MIKE	YL 114-117, YM 115
KELLY TRUSSELL SPRING	IB 120-121
KESSEN, WILLIAM	WP 135-137
KIDD'S TRUCKS INC	RD-RE 069-072, RK 070-073, RF-RG 069-070
KIEL AUTO REPAIR	WZ 140-144
KING, CLIFFORD	YD-YE 131-132
KINS, CHRISTOPHER	RV 137
KIRK, DARRYL	WJ 141, WK 141-142
KITZMAN, SCOTT	YM 167-170
KJELLMAN, MICHAEL	WA 168-170
KJP FAB & WELD	WI 109
KLATT, ANDY	IG 736A
KLEINSTEUBER, ANDREW	BLD E
KNAPTON, DAVID	WC 096-100
KNEEN, EDWARD	RJ 118-119, RK 119
KNUDSON, ALEX	YL 142-143, YM 140-143
KOCHAN, SCOT	WH 144-146
KOEHLER, DANIEL	RW 136-138
KONSRST, JEFF	YL 152
KONTOS, TODD	RI 094-095
KOSHINSKI, ROBERT	YN 120-121
KOTAJARVI, LOGAN	YL 140-141
KRAUSE, BEN	RN 119-120
KRAUSE, DARYL	YC 145-148A
KRAUSE, JOHN	YF-YG 144-146
KROGMEIER, KEITH	YK 112
KRUSE, JASON	YL-YM 148, YL 149
KUNZ, KEITH	WZ 145-147
KUPSTYS, JOHN	RL 122-124 RL 127-132
KURKIEREWICZ, FRED	WW 141-143
KUSCHEL, JACK	BLD #2 990-992
KWIK WIRE	YJ 146-152
L&L CUSTOM PERFORMANCE	WX 105-111
LALOR, JASON	RL 142
LAMBRECHT, MARK	WB 104-105
LARRY'S HANDYMAN SERVICE	WA 151-154
LAUBER, RAY	YG 117
LEE, EDWIN	YI 132-133
LEFEBER, TOM	WL 125-126
LEIGH, JASEN	RN 122-123
LEIS, COLIN	RJ-RK 116-117

LEISNER, DALE	WN 129-130
LENOX, AARON	WU 119
LEOMBRUNI, MICHAEL	WS 113-117
LEONARD, BERNIE	GG 101
LEVEKE, RANDY	, CC
LEVERANCE, JOHN	RE 119
LEWIS, DUSTIN	WR 118, WS 118-123
LINDBERG, WILLIAM	WM 151-157
LINDSAY, JOHN	YF 171-175
LINIEWSKI, ROB	RI 125-126
LOCKMAN, RICHARD	WE 114-116
LOCKREM, MARV	YJ 122-126
LOGAN, JAMIE	WA 120
LONG, JONATHAN	RF 113-118
LUSTIG, JEFF	RL 141
LYMAN, STEVEN	WD 095
LYONS, TERRY	RB 127
M/R RACING EQUIPMENT	RW 139-143
MACEK, KARL	IG 735
MADARY, JOE	WQ 127-130
MADAUS, DAVE	RK 130-131, RJ 140
MADISON CUSTOM POLISHING & PLATING SERVICE	IB 115-115 1/2
MADSEN, RAY	IB 128-129
MALCHESKI, JIM	RB 134-136
MALEC, RALPH	RRL 121-124
MALY, ERIC	YC 155
MARHAL, JOE	WD 155-157
MARTIN, CHRIS	RJ 146-147, RN 135-138
MARTIN, FRANCISCO	WL-WM 122-123
MARTINSON, JON	WA 165-167
MASKREY, CHAD	YA 112
MASSINGILLE, JAMES	RS 137-138, RT 137
MAZUR, JOSH	WD 116
MCCABE, DAN	WC 104-108
MCCABE, MARK	RF 111-112, RG 111-112
MCCARTY, JIM	YL-YM 126-133
MCCLAIRE, KEVIN	YH-YI 130-131
MCDONALD, WILLIAM	WC 127-130
MCESSEY, STEVE	WH 104-108
MCGILL, JERRY	IB 145-148, 148 1/2, YC 113
MCKEE, ALAN	YN 151-152
MCLAUGHLIN, MATT	WN 110-121, WO 110-113
MCMEEN, JIM	WH 109-111, WI 110-111
MCNEISH, PAT	RF 075-081
MEETZ, JEWEL	RC 076-079
MEIER, LOWELL	WV 127-131 WW 127-131
MERVS CLASSIC CHEVY PARTS	WA 114-119
METAL FINISHING SUPPLY	YG 114-115
METZ, LEO	RB 128
METZKE, KEVIN	YD 133-134, YE 133-134
METZKE, KEVIN	YE 135-136
MEUNIER, JOHN	WN-WO 134
MEYER, FRED	WL 124, WM 124-126
MEYER, ROBERT	RE 082-083
MIDWEST EQUIPMENT SPECIALISTS	BLD #2 927F-931, 970-973F
MIDWEST FAB INC	IF 633-633A, 634-634A
MIJAL, JEFFREY	IB 143-144
MIKOS, MYRA	RS-RT 142-143
MIKUNDA, JACK	RU 128-132

MILES, JEREMY	WP-WQ 104-105
MILEUSNICH, STEVE	WV 153-155
MILLER, AL	RP-RQ 107
MILLER, CHAD	WA 182-184
MILLER, FRED	WB 089-092
MILLER, MICHAEL	WR-WO 151-154 WV 151-152
MOFOCO LLC	YN 127-133
MOGENSON, JEFF	WB 111-113
MOLL, ERIC	WT-WU 142
MONTAGUE, SCOTT	RW 117-118
MOORE, LEE	WK 140
MORIARTY, MIKE	WE 122-126
MORTON, JAMES	WB 118-120
MOSS, JULE	RD 132
MULLENBERG, DALE	WD 130-136
MUNDSCHAW, BRAD	RS 101
MY LOCAL PUZZLES	IB 119
NACHTEY, JOHN	YN 111-112
NAPA PAINT EQUIPMENT	WAA 142-145
NEAT COLLECTIBLES CORP	WF-WG 143-146
NEAT OLD STUFF	BLD #1 807-811
NELSON, MARK	YN 174-175
NEU, DAVE	WR-WO 139-144
NIEDBALSKI, CHRIS AND JOE	YI 122-123
NIEVERTORN, ROGER	WH 123-124
NO LIMIT MOTORSPORTS	WI 127-130
NOLAN MOTOR SALES	WAA 107-110
NORD, LARRY	RW 145-146
NORTON, PAT	WAA 090-091
NYCZ, BRYAN	WH 089-90
ODONNELL, PATRICK	RL 125-126
OECHSNER, GLEN	RV 145-146
OELHAFEN, SCOTT	WP 115-121
OLSON AUTO EXCHANGE	YD 173-175, YE 170-175, YC 157-158
OLSON, DOUG	YK 110-111
OLSON, RANDY	WT 154-157, WU 156-157
OLWELL, ROBERT	WQ 123-126
ORY, LARRY	WAA 132-133
OSUNA, SONIA	WX 151-154
OTTE, DAN	YM 104-106
OTTERS, CAROLYN OR CHRISTOPHER	WE 109-111
OTTERS, TIM	WF-WG 110-112
PAGAC, DICK	WM 114
PALMER, SCOTT	RK 074-075
PANNING, BRANDON	WA 190-192
PAPE, BRUCE	RH 069
PAPE, ROB	RI 073
PAPE, TODD	RH 072-075
PATCHAK, JEFFREY	WF-WG 154
PAULEY, KIRBY	RRN 111-112
PAVLOVICH, DUSAN	RRL 107-108
PEER, BOB	YD-YE 127-128
PEHL, BRAD	WR 119-123
PELOWSKI, CJ	WT 127-130
PERDZOCK, DAN	YK 150-154
PERKINS, JEFF	WO 135-138
PETKUNAS, JOE	YN 162-164

PFEIFFER, RICHARD	WM 115
PICCHIETTI, PHIL	WB 124
PIERCE, BRYAN	YF 147-150
PISCHKE, ETHAN	RF 109-110
PITTS, CHARLES	CC
PJS AUTO LITERATURE	BLD #1 840-846, 855-861
PLOC, MICHAEL	RK 111
POLASKI, TYLER	RJ 089-092
POPS THIRD GEN	YN 122-124
PORSTNER, SAM	WA 225-227
PORTE, DAN	WV 110-111
PORTRATZ, RUSS	RJ 095
POULOS, PHIL	WI 121
POWELL, SARAH	WP 138-140
PRECISION CARBURATOR	RF 088
PRECISION CHROME INC	YB-YC 173
PRESTON, WESLEY	YC 170-171
PRIBBENOW, SCOTT	RB 89 RC 89-90
PRICE, DAN	YB 129, YC 129-130
PROSCHASKA, PHILLIP	YB-YC 120
PULVER, GENE	WI 117
PUNSEL, JOHN	WK 115-116
PUNSEL, JOSH	WK 117-118
PUTNEY, GARRETT	WN-WO 141-143
PYPER, RICHARD	WC 93-95
QUALITY AUTO CARPET	IF 638-639
QUALITY SIGNS	BLD #2 978-981
RABE, ROBERT	YA 118-120
RANDALL, KURT	WAA 122-123
REDMOND, KEVIN	RS-RT 130-131
REED, JEFF	IB 108, IB 111-114
REINEKE, EUGENE	YK 106-108
REINSMA, MARK	YH 122-124
RELIABLE PLATING WORKS	WF 113-114
REMMICK, DARRYL	WB 151-152
RICHARDS, LARRY	RW 147-148
RIDOSKO, CRAIG	YK 140
ROBLESKI, RALPH	RK 137-141
ROCKER KING LLC	RF-RG 084-086, RF 087
ROELING, RICHARD	WB, WC 134-136
ROETHEL, DON	WP 127-131
ROGERS, WILLIAM	BLD #1 803-806, 812
ROGNHOLT, MARK	YL-YM 146, YL 147
ROLEFSON, TODD	WC 124
ROSEBUSH, TERRY	YK 104-105
ROSS, RANDY	RS-RT 144-146
RT SPEED SHOP	YF 122-124
RUBBER GUY	WK 104-109
RUDNICKI, RICK	WB 153-157, WC 151
RUDOLPH, WYATT	YC 156
RUETTEN, BRYON	RL 107-110
RUPLINGER, SANDY	RF 122-126
RYANS AUTO CARE INC	WJ-WK 143-146
RYMKUS, CURT	RP-RQ 117
SAFRO, JOHN	RJ 127-146
SALES, AMY	BLD #2 913-914
SALES, JIM	BLD #2 961-965
SAPP, TROY & KENT	WF-WG 104-109
SARDESON, RON	YH-YI 144-153

SAXBY, JON	BLD #2 921
SCANLIN, KEN	RB-RC 087-088
SCHAEFER, JAMES	WG 089-093
SCHAEFER, RUSS	YG 147-156
SCHAEFER, ZACK	WD 117
SCHALLER, JERRY	RL 119-121
SCHEID, DOUGLAS	WX 127-138
SCHEPPYS AUTO BODY	WD 104-106, WE 104-105
SCHERER, SCOTT	YI 134-135
SCHERWINSKI, JOHN	RH 070-071
SCHWEWE, VIRGIL	RU 142
SCHMID, ROY	WAA 174-175
SCHMIDT, DALE	WE 121
SCHMIT, KEN	RG 118-119
SCHMITT, DARREN	WG 151-152
SCHMITT, JOHN	YH 128-129, YI 129
SCHNERING, RICHARD	YN 145-147
SCHOENHERR, SCOTT	WK 113-114
SCHRAMSKI, PATRICK	RS-RT 126-127
SCHULTZ, JAMES	WJ 120-122
SCHULTZ, JOHN	YN 167
SCHULTZ, KAL	WAB 113-118
SCHURMAN, JOHN	YH 165-171, YI 163-168
SCHWEITZER, WAYNE	WG 99-100
SEDGWICK, TOM	WK 120-122
SEMRAU, CURT	RN 117-118
SEPULTIS, TOM	WV-WW 105-109
SHADES OF FUN	YM 120-124
SHICK, BRIAN	WD 107-108, WE 108
SHIMSHAK, TIM	WB-WC 121-123
SHULT, ALAN	WA 172-173
SIEGELE, MIKE	WC 125-126
SKRECZKO, CHRIS	WM 130-136
SKRETTA, LUCIAN	IB 130
SLACKERS CAR CLUB	WA 213 -219
SLETTOM, BRYAN	IG 724
SMART, DENNIS	WL-WM 137-139
SMITH, BILL	WAA 129-130
SMITH, CHRIS	WAA 131
SMITH, DAVE	YI 137-140
SMITH, DAVID	YN 153-161
SMITH, TIM	WH 116-120
SMOODY, TIM	WW 123-125
SMYTH, JOSH	WH 134-137
SNIDER, CRAIG	WH 127-130
SNOREK, RICHARD	WZ 117-118
SOUPYS GASKETS	BLD #2 936-940
SPELTZ PERFORMANCE	WA 139-140, WA 141-146
SPERACINO, MARTIN	WE 154-157
STAMPFLI, LANCE	RRN 108-110
STANOCH, JAMES	WH-WI 112
STAUBACH, GARY	RK 107-110
STEFFEN, GERALD	BLD #2 959-960, RI 121-122
STEPHENS, DAN	WC 152-157
STEPTOE, MIKE	YF 153-156
STEVENS, DON	RDA 127-128
STEVES 51 REPAIR	YJ-YK 142-143
STOMMER, ERIC	WAA 121
STRAPMAN	YA 099-108

STRASBURG AUTO LITERATURE	IB 138-140A
STREET STYLE RIMS	YAB 091-095
STREGE, DENNIS	WC 111-113
STRUEBING, EDWARD	WG 094-098
STULTS, JIM	WD 140-142
SUCHY, RUDY	IG 734
SUCKOW, JEFFREY	WD 143-146
SUHM, JEFF	YB-YC 126-128
SUIZER, JIM	WJ-WK 133
SWADLEY, RALPH	RK 112-115
SWANSON, BOB	WF 094-100
SWANSON, SCOTT	YF 138
SWEARINGEN, KEITH	BLD #2 976-977
TABBERT, JEREMY	WR-WO 155-157
TANGNEY, RICHARD	WT-WU 143
TAORMINA, PHILLIP	YJ-YK 141
TC TRUCK PARTS	YF 163-167, YG 160-167
TELITZ, TOM	RV 144-146
TERZINSKI, RODNEY	RU 113-115
THARP, CHESTER	RV 138
THE BUMPER BOYZ	RRM 111-117
THE JEEP GUYS	WN-WO 122-126
THE SIGN SHOP INC	RL 147-150
THOMA, DANIEL	WE 119-120
THUME, IRVIN	RW 123-126
THUROW, JOSEPH	RC 086
TIMBLIN, SHAWN	WP 141-143, WQ 140-143
TIRE-RIFIK INC	RV 117-132, RW 130
TJ PROFORMANCE	YD 149-154
TLC RESTORATIONS	BLD #1 816-821
TNT BODY SHOP SUPPLIES	WAA 134-137
TOEPFER, TOM	RJ 135
TOMLIN, ERIK	YD 141-143, YE 140-143
TORO, SCOTT	RQQ 112
TRANS AM PARTS DEPOT	YK 131
TRAPP, DICK	WE 107
TREFFERT, JAMES	IB 101-102
TRUE GRIT SANDPAER SUPPLIES	WV-WW 114-116
TRUJILLO, JOSH	RP-RQ 102-103
TRUTY, KARL	RB-RC 110-112
TUFF RAIL	RP-RQ 113-116
TY'S TOYS	BLD #2 922-924, 925A-925E
UDELHOVEN, TOM	WB 127-131
UMLAND, SCOTT	RH 082-083
UNDERWOOD, EUGENE	WP-WQ 106-112
UNKE, FRED	RU 137-139
VALE, GREG	RU 133-134
VALLEY AUTO SALES	RU 123
VANDE VORT, ROBERT	RB-RC 081-082
VANWINKLE / WILLIAMS, GARY/ TOM	WL-WM 117-119
VAZE, DAN	RU 135-136
VILLANI, COREY	RRL-RRM 101-103
VINTAGE LOCK	RB 123-126 RC 124-126
VINTAGE TITLES GREENFIELD GALLERY	IA 027-029, 050-052, RA 121
VIRAG, MICHAEL	WAA 161-166
VOIGT, SHAUN	WI 151-153
VOLLA, RON	YG 112-113
VON NEUMANN, ALEX	RL 162-163

VOSBERG, GARY	IB 106-107
WADDELL, LARRY	YF 140
WAGNER, BRIAN	WJ 123-126
WAGNER, DENNIS	WD 112
WAGNER, STEVEN	YL 112-113, YM 112
WALDOCH, JOHN	RK 127-129
WALMER, RAY	RD-RE 115-117
WALWORTH, ROSS	YM 136-139
WASTAK, DAVE	YL-YM 165-166
WAUKESHA OLDE CAR CLUB	WF-WG 127-132
WAZ, TIMOTHY	WA 127-129
WEEKLEY, MIKE	WJ 151-152
WEIR, MIKE & STEVE	YE 160-161 YF 157-162
WESTYS COLLECTABLES	WR-WO 131-134
WHITE, ROBERT	YL-YM 171-172
WHITING, DOUG	YL 118-120
WI DELLS FESTIVALS	BLD #2 947-950
WIESENBERG, TIM	WU 153-155
WIGCHERS, DUANE	RRM 120
WILLIAMS, MIKE	WN 138-140, WO 139-140
WITHROW, PAUL	BLD #1 801-802
WITKOWSKI, MARK	WZ 152-153
WITT, CAIN	RU 143
WITTE, RICK	RRN 126-128
WIZA, RYAN	WH 091
WOLDANSKI, GARRET JAMES	WN-WO 146-147
WOLDANSKI, GARY	WN-WO 145
WOLOSZYNEK, PAUL	WY 127-131
WOOD, RANDY	RF-RG 103-107
WOODYS AUTO LITERATURE & MORE	WT 114-119, WU 114-115
WORKMAN, STEVE	WH 125-126
WOYCZIK, RICK	WZ 119-126
WURSTER, KENYON	RRL-RRM 127-128
WYSS, JOHN	WK 139
YARBER, CHARLES	WT-WU 125-126
YEARWOOD, CHRIS	RL 133-140
YERKE, GREG	WT-WU 151-152
YOGI'S INC	BLD #2 995-999
YOST, EVERETT	WB 145-146
YOUNG, MIKE	WU 118
ZAHORA, GREGG	RRL 115-116
ZANDI, JEFF	WV 120-124, WW 120-121
ZANGERLE, ART	WA 121-126
ZASTROW, WAYNE	WAA 103-106
ZIMMERMAN, JEREMY	RJ 085-087
ZIMMERMAN, TODD	WY 151-155
ZUBKE, PETER	RH 078-081





**Merv's Classic Chevy Parts** **Come see us in WA 114-119**  
*Specializing in '55 - '57 Chevrolet Cars*



Phone: (641) 648-3168 : (866) 955-5657  
 mon-fri 8:30am-5:30 pm : Sat by appointment  
 11603 Co Hwy 5-33, Iowa Falls IA 50126  
 E-mail: info@mervsclassicchevyparts.com  
 web: www.mervsclassicchevyparts.com

**ROCKER KING**



ROCKER PANELS & BODY REPAIR PANELS  
 1940-1964  
 FRAME DIMENSIONS  
 1934-1990  
**RED FIELD**  
**RF #85-86**

PH: 262 549-9583 : Cell 262 424-5286  
 EMAIL: rockerking57@yahoo.com  
 WEB: www.rockerking.com

GARY BAUER 804 CHICAGO AVE  
 WAUKESHA, WI. 53188

**RPW**  
 RELIABLE PLATING WORKS




**Custom Chrome Plating**



Reliable Plating Works 5230 S 13th St Milwaukee WI 414-397-0868  
 Tina Maliszewski tinam@rpwinc.net www.rpwinc.net 414-282-4779  
 Re-Chrome Steel, Stainless Steel, Aluminum & Brass Parts




**A SHOW LIKE NO OTHER ...**



**HOT RODS & HORROR REELS**  
 World Premieres of Horror and Sci-Fi Short Films

**THE WISCONSIN THRILLERS**

Tickets:  
 \$10 in a "cool" car  
 \$15 otherwise




Gates Open @ 4p  
 Films @ 7p (hoods down)

**Sept. 27 & 28**  
 Different films each night!

Car Show AND Horror & Sci-Fi Film Festival  
 at the Highway 18 Drive-in Theater

**Coolest Car each night will win a cameo in an upcoming movie!**

**40**  WISCONSIN THRILLERS

**MADISON MADE,  
 FAMILY OWNED,  
 COMMUNITY LOVED  
 SINCE 1962.**

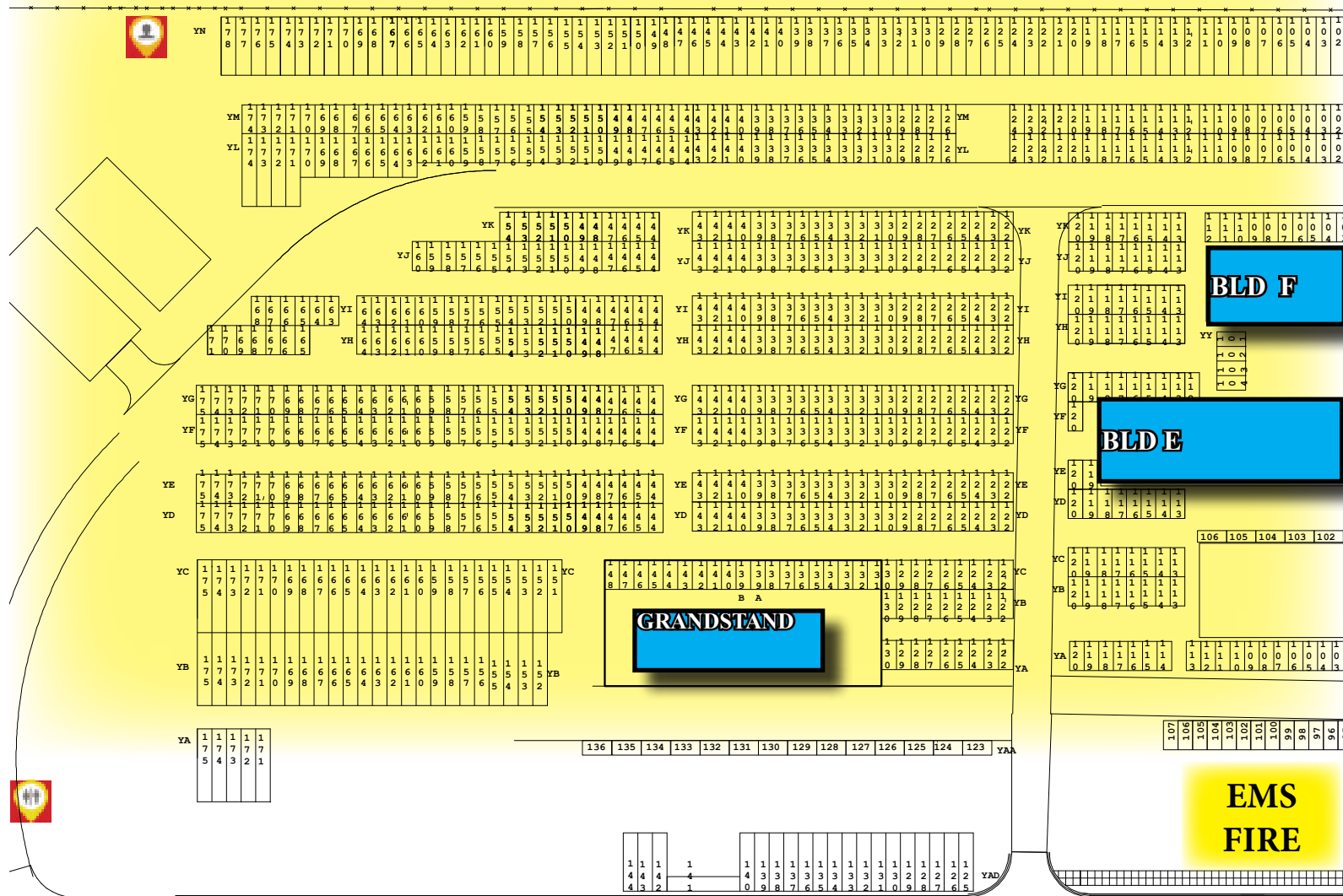



@CHOCOLATESHOPPEICECREAM  

MADISON SHOPPE LOCATIONS 

Gate #11

YELLOW FIELD



### MAP LEGEND

- ATM
- FIRST AID
- FOOD & DRINK
- RESTROOM
- MERCHANDISE
- SPECTATOR ENTRANCE

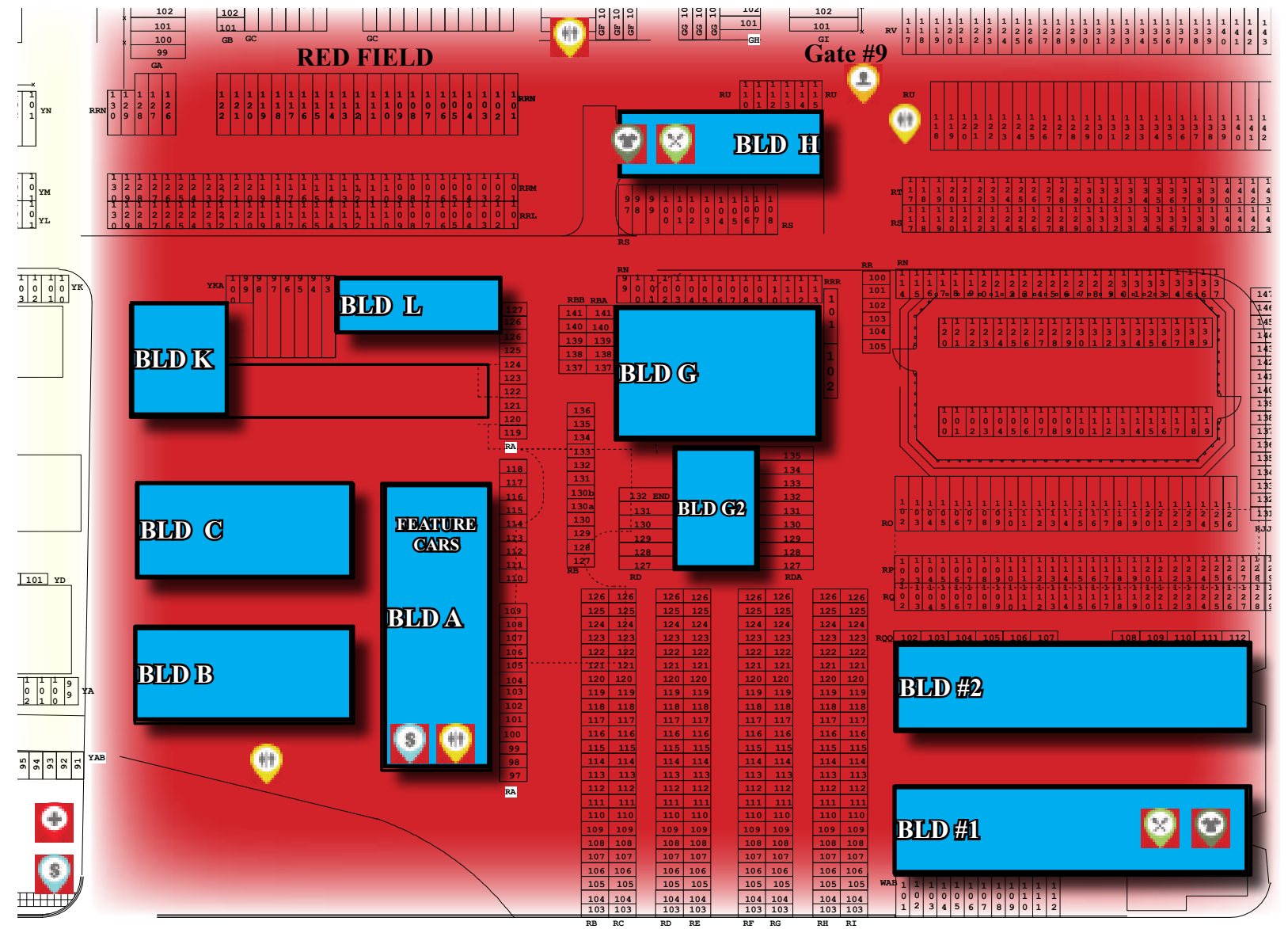
**CAR CORRAL**  
Pre Register & View Cars  
Online

SHOW CARS

### 2024 EVENT T SHIRTS



Gate #1  
CAR CORRAL  
ENTRANCE



Gate #9

BLD L

BLD K

BLD C

BLD B

FEATURE CARS

BLD A

BLD G

BLD G2

BLD #2

BLD #1

SCOOTER RENTALS

BLD J

SHOW CARS

Gate #2  
SHOW CAR  
ENTRANCE

Gate #3  
VENDOR  
ENTRANCE

Gate #8										Gate #4									
169	168	167	166	165	164	163	162	161	160	161	160	159	158	157	156	155	154	153	152
151	150	149	148	147	146	145	144	143	142	148	148	148	148	148	148	148	148	148	148
146	145	144	143	142	141	140	139	138	137	147	147	147	147	147	147	147	147	147	147
136	135	134	133	132	131	130	129	128	127	146	146	146	146	146	146	146	146	146	146
126	125	124	123	122	121	120	119	118	117	145	145	145	145	145	145	145	145	145	145
116	115	114	113	112	111	110	109	108	107	144	144	144	144	144	144	144	144	144	144
106	105	104	103	102	101	100	99	98	97	143	143	143	143	143	143	143	143	143	143
96	95	94	93	92	91	90	89	88	87	142	142	142	142	142	142	142	142	142	142
										141	141	141	141	141	141	141	141	141	141

### JENSEN CAMARO

JOHN JENSEN  
RESTORATION PARTS FOR  
GM CARS & TRUCKS

TIPTON IOWA 563-886-3226  
CELL: 563-357-3137  
EMAIL: DJ67CAMARO@AOL.COM

VISIT US AT BOOTHS:  
WA: 193-211

**WWW.JENSENCAMARO.COM**



# WEDL'S

## HAMBURGER STAND & ICE CREAM PARLOR

EST. 1916

200 EAST RACINE ST JEFFERSON WISCONSIN 920-674-3637



### Welcome to the Midwests Largest 1 Day Indoor Swap Meet December 1, 2024

Super Sunday is the place to be when it comes to parts! Vendors from all areas converge at the Indiana State Fairgrounds to offer some of the best in both N.O.S. and used parts. Our wide variety in vendors assures you will find unique or hard to find parts. Super Sunday is an all make, all model event. 500+ Indoor Space GM-FORD-MOPAR- ALL MAKE MODEL



**Vendor Information:**  
Be a part of Super Sunday, the fastest growing event in the Midwest! This all-make & model automotive swap meet features over 500 indoor spaces, and is the Midwest's largest one day swap meet & car sale. Pre-register for your spot today. Call 317-296-0336 or Email: [freemanssupersunday@gmail.com](mailto:freemanssupersunday@gmail.com)

**Spectator Information:**  
Hours 8am-3pm  
\$8 admission adults  
Kids under 11 free  
Web: [www.freemanssupersunday.com](http://www.freemanssupersunday.com)



See hundreds of exhibitors displaying the widest selection of parts & services you could ever imagine. There are new and NOS along with the latest reproduction parts & restoration services available. For the Street & Custom crowd, there are custom body panels speciality wheels and tires, high performance parts. Chrome Accessories, customizing services, and multitude of other products.

**MES MIDWEST** CHECK US OUT IN BUILDING #2  
EQUIPMENT SPECIALISTS 927F-931 AND 970-973F

**DON'T MISS THIS BUNDLE DEAL!**

**4-POST LIFT** **\$3499**

★ **LEGACY** AUTOMOTIVE LIFTS  
8,000 LBS. CAPACITY  
+ DRIP TRAYS & RAMPS!

608-838-8151  
★ **FREEDOM** SHOP EQUIPMENT  
[www.freedomshopequipment.com](http://www.freedomshopequipment.com)



*Vinnie's*

**ROCK BOTTOM EXPRESS**

**Bar and Grill**



211 S. GARDNER AVE- DOWNTOWN JEFFERSON  
920.675.1950



**Just Around The Corner...  
All Across The Nation.**

With over 4,800 O'Reilly Auto Parts stores in 47 states, we're never far from home.

**OReillyAuto.com**  



**FREE TESTING**  
of alternators, batteries,  
modules & starters.



**WIPER BLADES**  
FREE wiper blade installation.  
Applies to most vehicles.



**FREE RECYCLING**  
of oil, oil filters, gear oil,  
transmission fluid, & batteries.



**WE LOAN TOOLS**  
Borrow the specialty tool you  
need to get the job done.



118 locations  
across the state



**TLC**  
*Restorations*

**635 Greenman St, Milton, WI**  
**PH: (608) 931-9531**

**[www.facebook.com/tlcrestorationswi](http://www.facebook.com/tlcrestorationswi)**